

# ERCP

## (Endoscopic Retrograde Cholangiopancreatography)

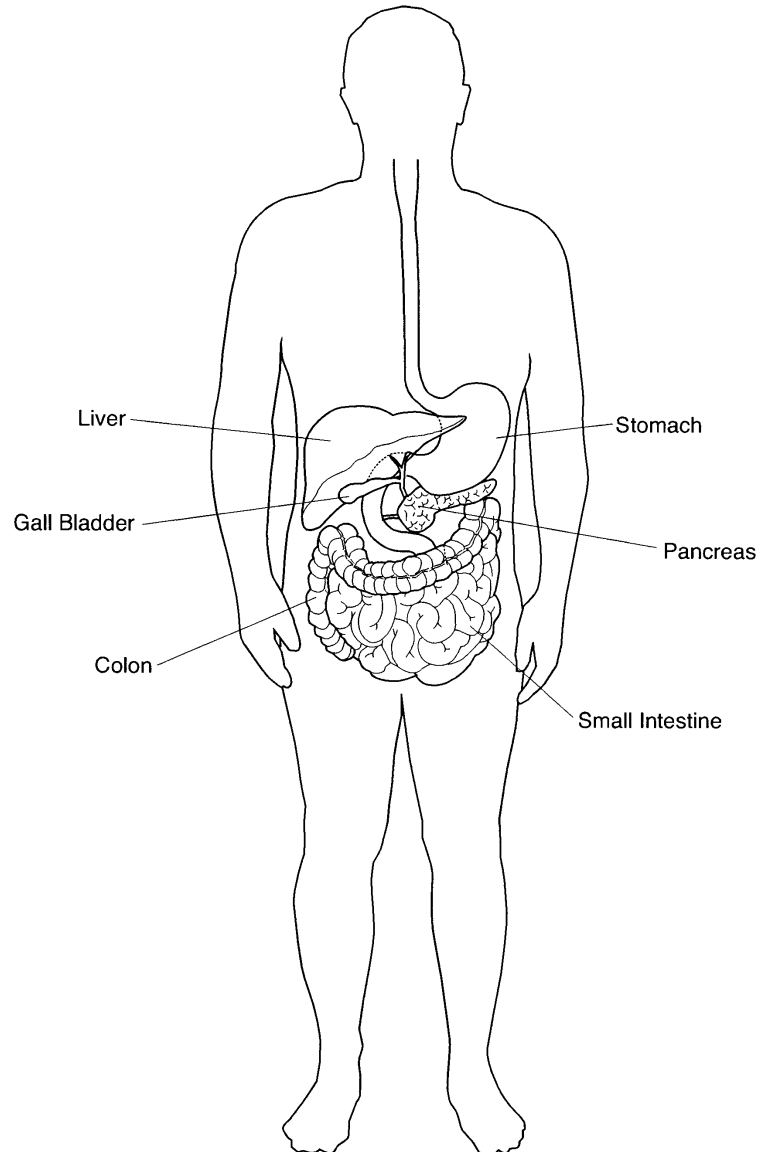
ERCP is a test of the ducts of your gallbladder and pancreas. Ducts are small tubes that let fluid pass from one place to another. These are parts of your digestive tract. For this test, you will have a narrow tube put through your mouth and throat into your small intestine. Dye is put through the tube into the ducts of your gallbladder and pancreas. X-rays are taken.

An adult family member or friend needs to come with you to take you home after the test. It is not safe for you to drive or leave alone.

**Arrive on time for your test.** Plan on being here 2-3 hours. The test will take about 1 hour.

### To Prepare

- Your stomach must be empty for this test.



- Do not eat or drink anything, including water, after midnight before the test.
- Ask your doctor if you should take your medicines the morning of the test. If so, take with sips of water only.
- Tell your doctor if you have had any barium x-rays in the past week. Barium may affect this test.
- Before your test, tell the staff about:
  - Your medicines (herbals, over-the-counter, vitamins, and prescriptions)
  - Allergies
  - Other health problems and surgeries
  - Pregnancy

### **During the Test**

- You will wear a hospital gown.
- You lie on your left side or stomach.
- An IV (intravenous) is put in a vein in your arm. Medicine is given through the IV to make you sleepy.
- Numbing medicine may be sprayed into your throat to keep you from coughing or gagging.
- The doctor passes the tube through your mouth. You can breathe around the tube.
- Your doctor looks through the tube at the inside of the parts of your digestive tract.
- Dye is put in. You may feel some pain.
- X-rays are taken.
- The tube is removed.

## **After the Test**

- You will stay in the test area until most of the medicine wears off. You will feel sleepy.
- Your throat may be sore.
- You may feel bloated from air in your stomach.
- Your doctor will tell you what you can eat today.
- Medicines given during the test will make you sleepy. You will need to have a family member or friend take you home for your safety.
- Test results are sent to your doctor. Your doctor will share the results with you.

**Talk to your doctor or nurse if you have any questions or concerns.**